

Fotospeed

for every print

Test Chart Printing Instructions

Using the Adobe Colour Print Utility



Contents

| | |
|--|-------|
| Introduction | |
| Downloading the ACPU | |
| Printing the Test Chart: PC | |
| PC: Epson Driver Settings | |
| PC: Canon Driver Settings | |
| PC: HP Driver Settings | |
| Printing the Test Chart: MAC | |
| MAC: Printer Driver Settings | |

Test Chart Printing Instructions

Adobe Colour Print Utility for Epson, Canon and HP printers

Introduction

One of the prime concerns of many photographers when producing inkjet prints is the ability to reproduce onto paper what is seen on the computer screen. The main reason for this is the simple but little known fact, that all printers interpret colour differently. Each one has an in-built generic profile that it uses to describe the colour that it “should” produce.

This is built in by the manufacturer and in reality, is a ‘guess’ at what the printer should do. The guess is often wrong. A profile is essentially a description (a label or tag) of the characteristics of a device. For instance, each time you take a picture with a digital camera it will embed a profile within each image file. This profile is a description of the colour within that image file, which is a known international standard.

In order to ensure that the colour description is carried through to the printer, an output profile needs to be built for each paper that is used on a particular inkjet printer using a particular ink set and paper combination. An output profile will deliver known, consistent colour to your inkjet printer. This is achieved by converting the colour values in the input profile accurately to the output profile ensuring that the original colour description is maintained; much like a translation between 2 languages.

Building an output profile is a simple process. However, like most things in life, particularly computing, the process must be set up correctly.

The first part of this process is to print a test chart which will be used to create the profile. The test chart is the first building block to creating accurate printer output. It is essential that it is printed using the correct procedure. This is not difficult to do but if you are unfamiliar with colour management, it can easily be done incorrectly. If printed incorrectly then the subsequent output

profile will be incorrect. Following the instructions will ensure that the test chart printing process is carried out correctly and you will be guaranteed consistent, accurate colour each and every time you create a print. This will increase your enjoyment as well as saving time and money in reduced waste of paper, ink and time.

In order for an output profile to work correctly it is essential that the colour management (Colour Control) within the printer is switched off. If left on it will conflict with your custom profile resulting in inaccurate colour reproduction. There are many different printers on the market today and many of them use different methods of switching off the colour management within them.

In order for an output profile to work it must be able to convert from an input profile, as mentioned earlier. In order for an input profile to be available you must use a graphics"

Program that is capable of colour management. The best and most often used by digital photographers are Adobe Photoshop or Adobe Elements. It is essential that the test charts are printed correctly so please ensure that you follow the instructions precisely. If you provide an accurate test chart then you will be given an accurate profile. Equally, remember that garbage in, garbage out. Print the test chart on each paper that you want profiled, complete the Booking Form and post the chart to the address shown at the bottom of the Booking Form.

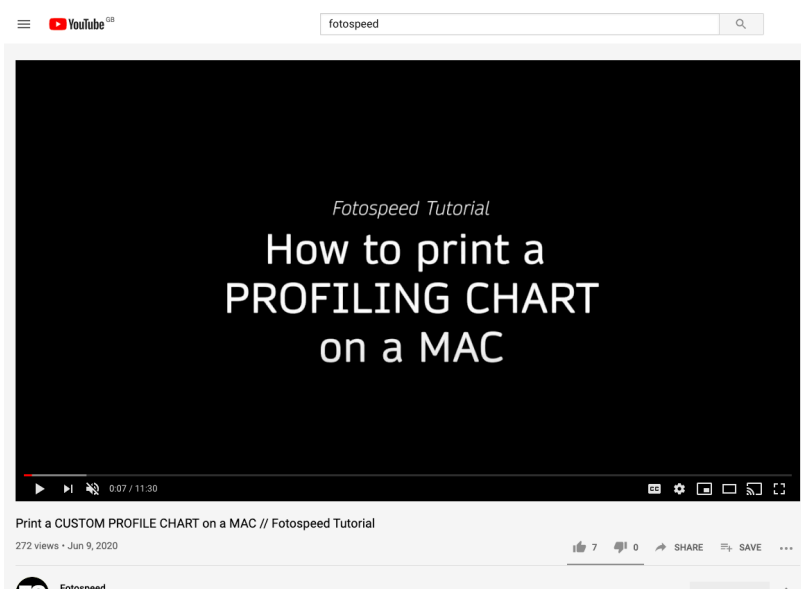
PLEASE READ THE INSTRUCTIONS CAREFULLY.

Fotospeed Academy Profiling Sessions

Through the Fotospeed Academy we also offer Profiling session via Zoom. Within these session you will be taken through how to print the profiling charts on your chosen system. Each session cost £20 and can be booked by call us on 01249 714555

We have also created free videos on the custom profiling process on our YouTube channel. Please follow the link below to the Profiling play-list on YouTube:

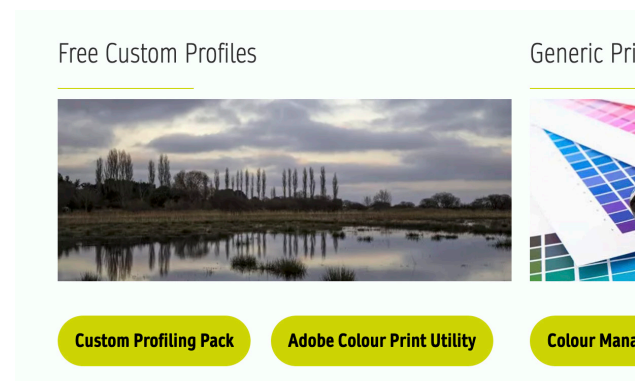
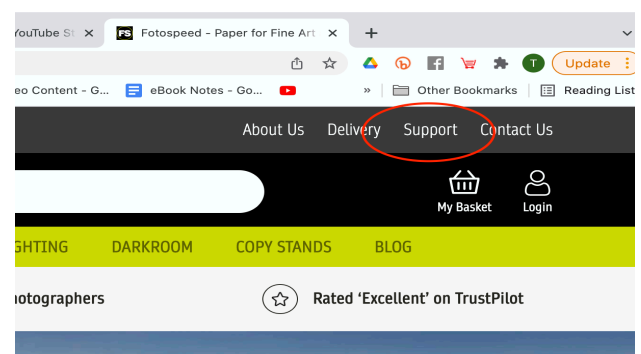
<https://youtu.be/WAFH2ehoZ-o>



Downloading the Adobe Colour Print Utility on both a PC and Mac

To download the Adobe Colour Print Utility:

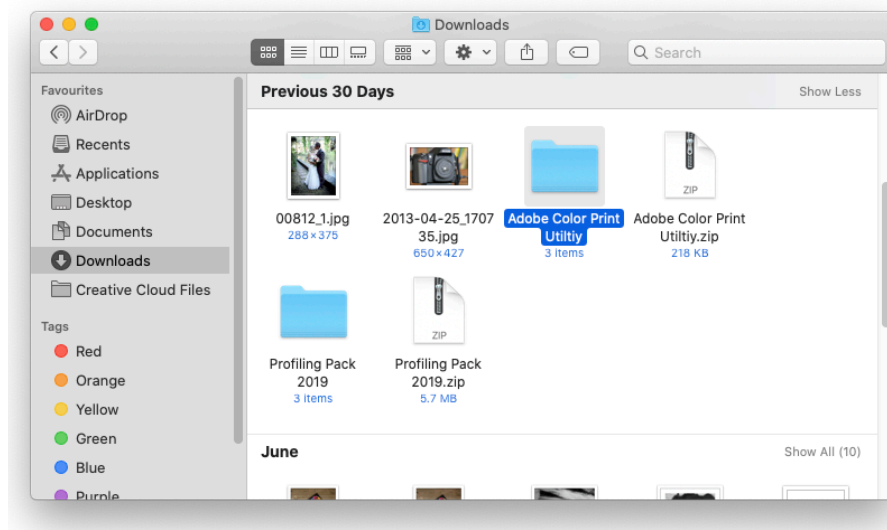
- Start by going to our website - www.fotospeed.com
- Click on the "Support" Tab on the green bar across the top of the page.
- Then scroll down to "Free Custom Profiles" > Click on "[Adobe Color Print Utility](#)" click link to download directly.
- This will download the Adobe Color Print Utility zip file.
- If you haven't already, you can download the test chart (that will need to be printed and sent into us for profiling) from the link titled "[Custom Profiling Pack](#)".



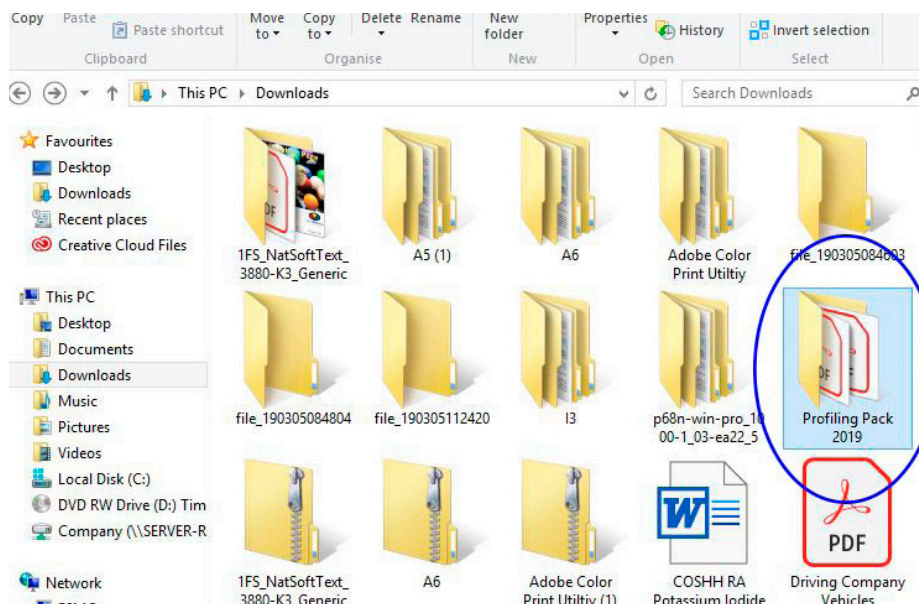
Opening the Profiling Chart in the ACPU.

The next step is to open the profiling chart in the ACPU.

- Firstly locate the ACPU download on your computer. The default is to save the files within your downloads folder. Which you can access through the FINDER on a MAC or through FILE EXPLORE on a PC.

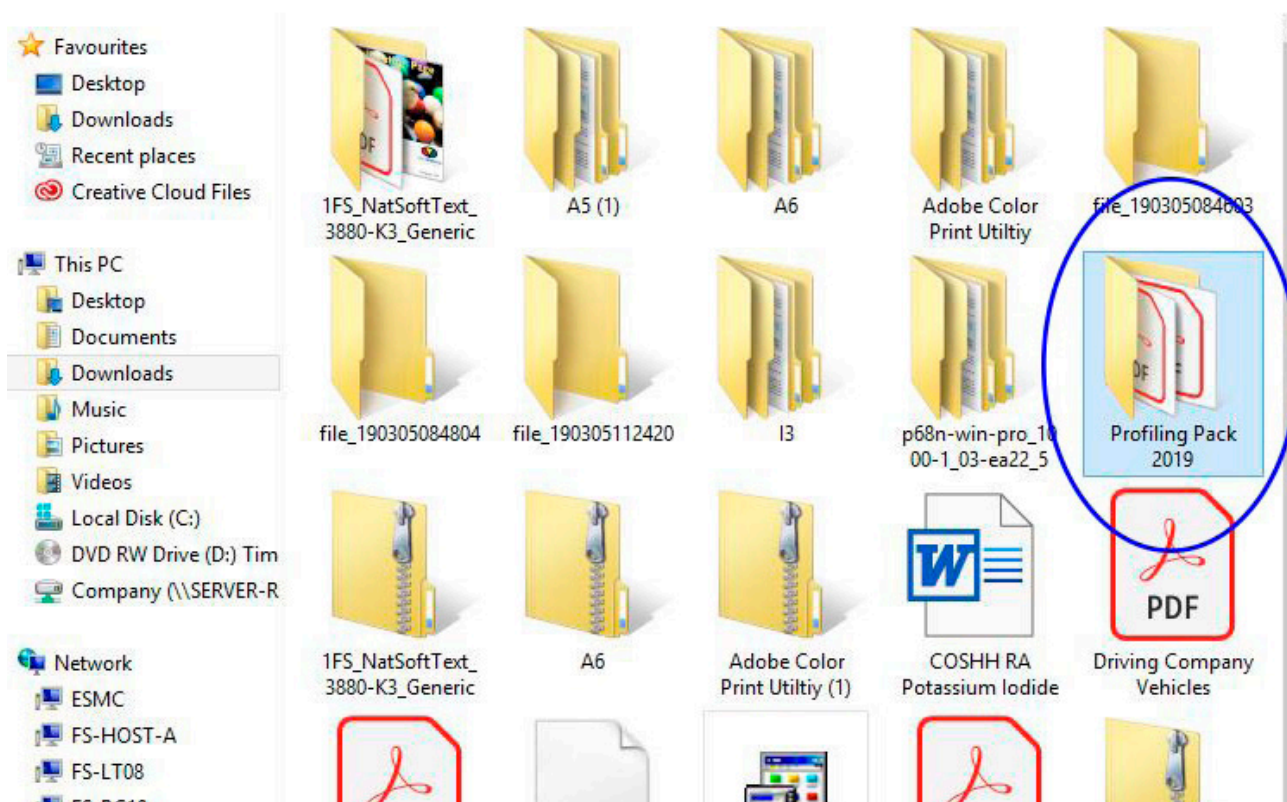


DOWNLOADS Folder on MAC



DOWNLOADS Folder on PC

- Once we have located the ACPU within our downloads we now need to open the chart.

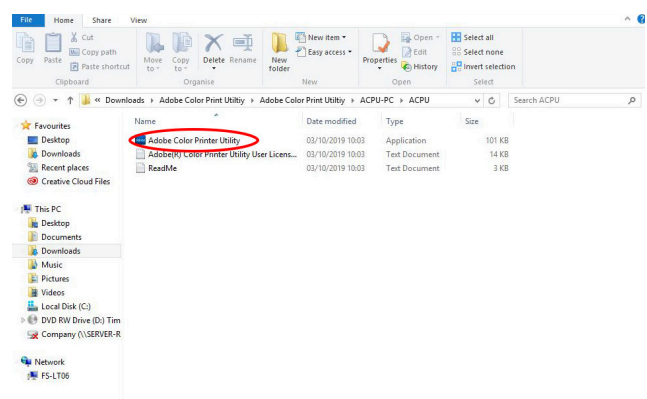
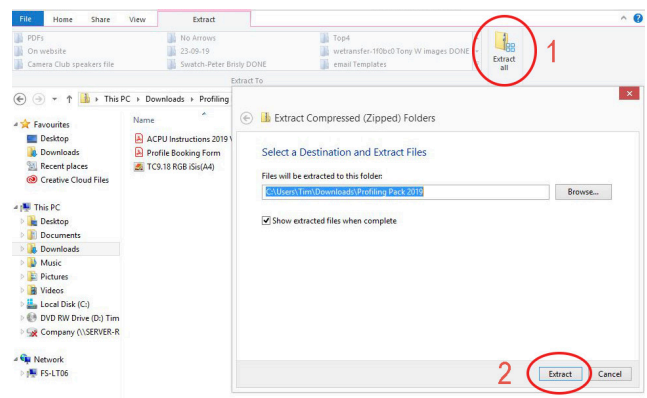
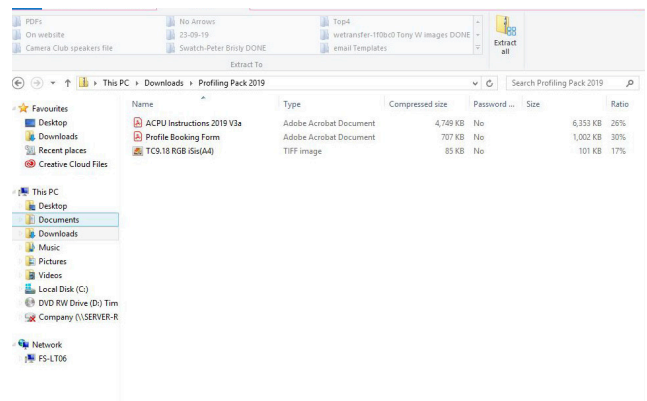
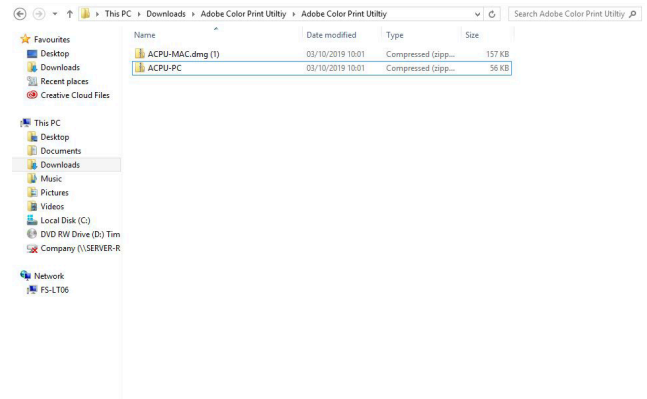


- Start by selecting if you are on a PC or MAC. Both versions of the ACPU are labelled within the folder. Please follow the instructions below for your type of system below.

| | | | |
|------------------|------------------|---------------------|--------|
| ACPU-MAC.dmg (1) | 03/10/2019 10:01 | Compressed (zipp... | 157 KB |
| ACPU-PC | 03/10/2019 10:01 | Compressed (zipp... | 56 KB |

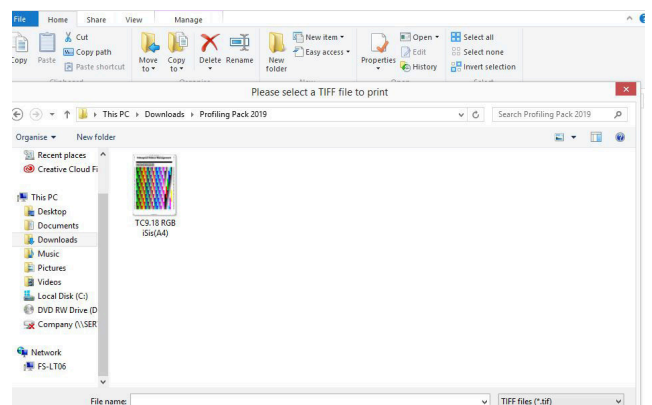
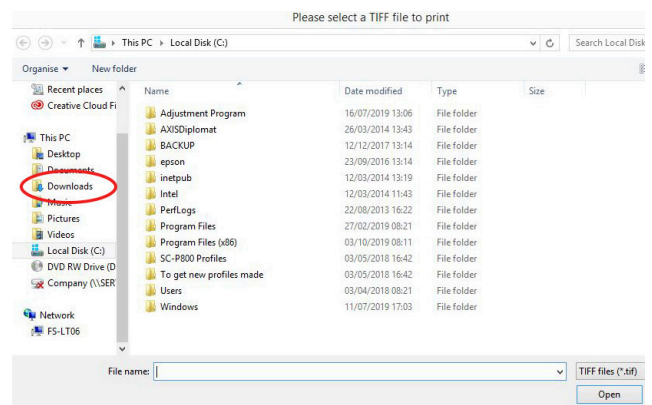
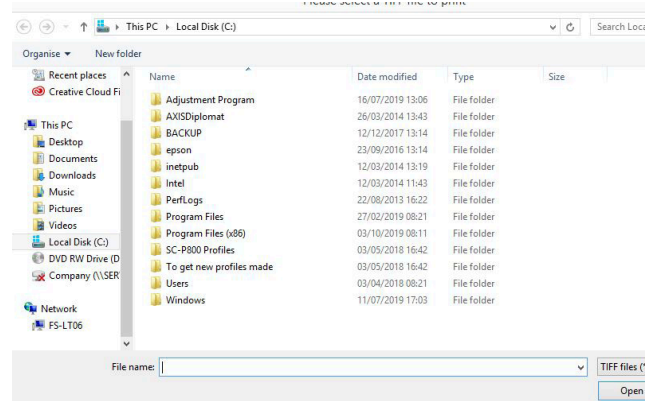
APCU Instructions PC.

- Once we have clicked on the “ACPU-PC” we need to extract the program for the Zip file downloaded.
- Start by double clicking on “ACPU-PC”
- Next click through the folders until you see three files listed. “Adobe Color Print Utility.EXE” “Adobe(R) Color Printer Utility User License Agreement” and a “ReadMe.txt.”
- Within this folder we need to click “Extract All” which will be in your tool bar at the top of the window.
- Then click “Extract” in the next box.
- Now double click on the blue Adobe Colour Print Utility icon.



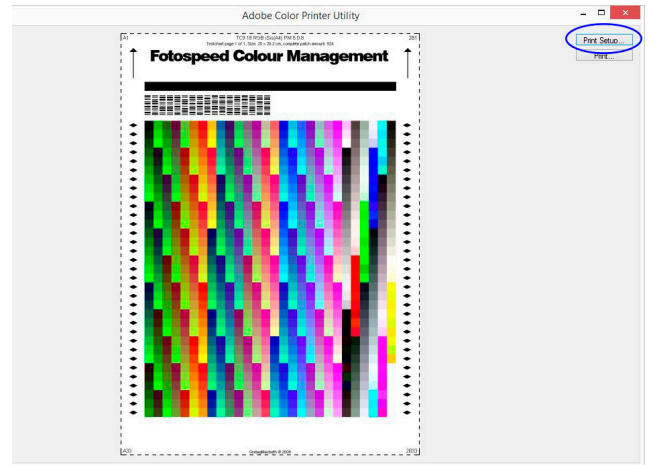
APCU Instructions PC.

- When you double click on the Adobe Color Print Utility icon a box will appear asking you to select a "Tiff file to open"
- You will now need to locate the profiling in your "downloads" by navigating using the file tree on the left hand side of the window.
- Once you have located the Profiling Pack within your downloads double click on the folder and you will see the Profiling chart named TC9.18 RGB iSis(A4).tiff
- Double click on the click to open.
- The chart will open in a small box in the top left of your screen.

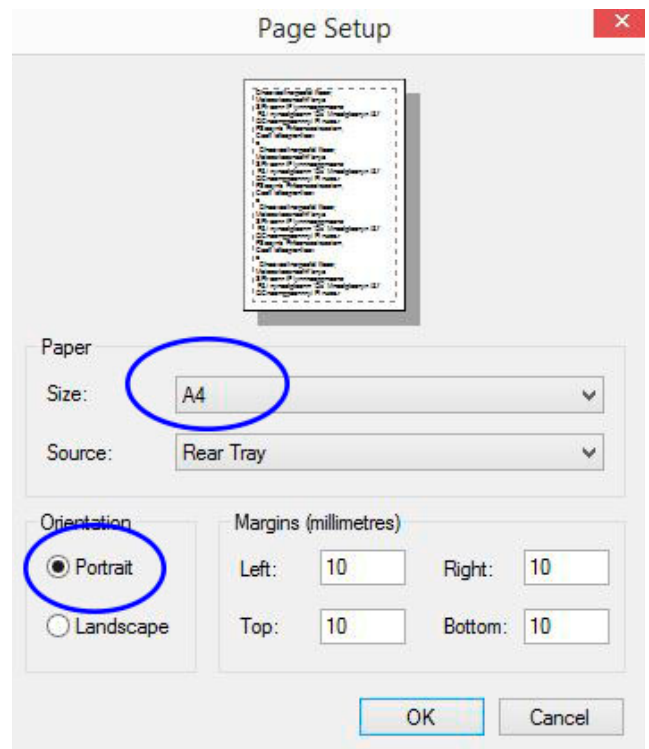


APCU Instructions PC.

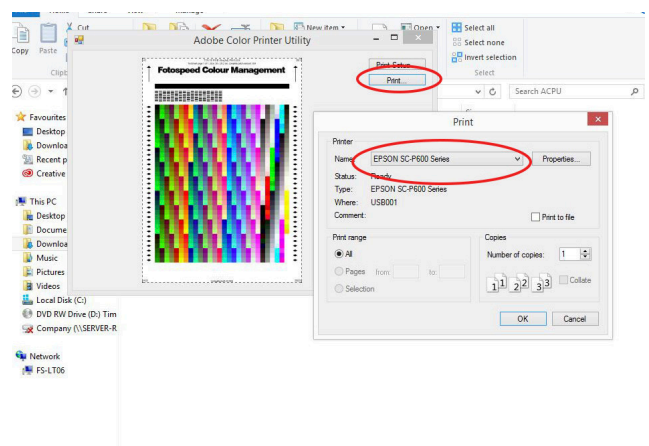
- Once you have the chart open it is now time to print.
- Start by clicking on "Page Setup".



- Within the Page Setup window make sure you have a paper size of A4 selected and the orientation is set to portrait and click "OK".



- Next you need to click "Print" and select the printer you are printing on.

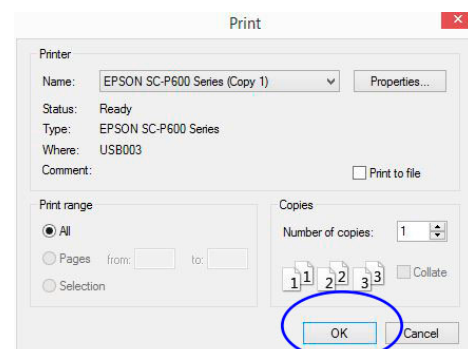
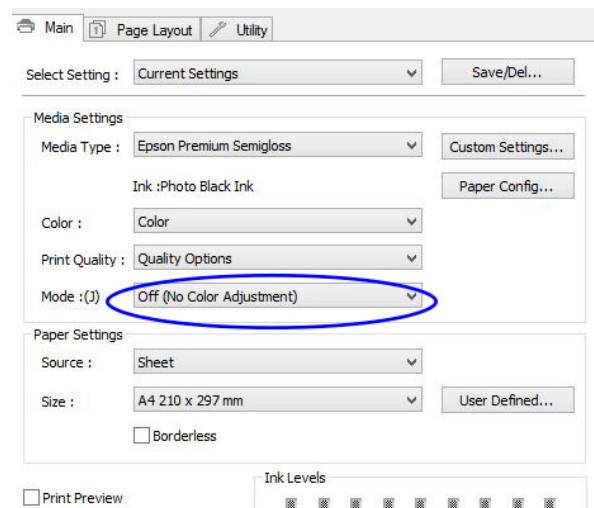
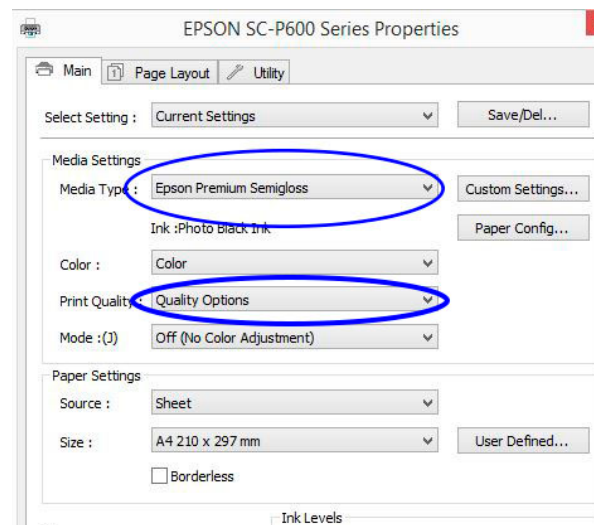


APCU Instructions PC.

- On each of the printers below I have highlighted how to turn off colour management, set the media type (to the recommend type on our paper information document within the profiling pack) and how to set the recommended quality option.

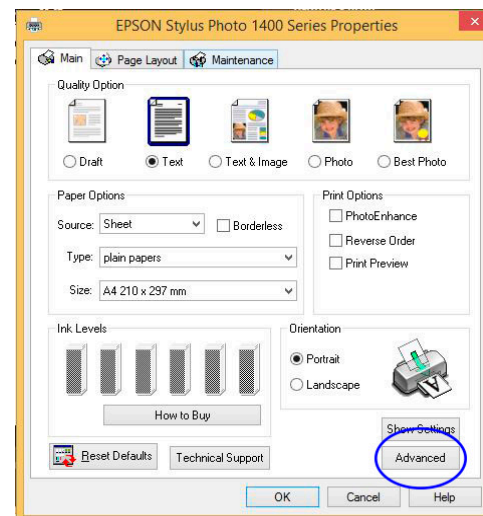
Epson.

- P700/ P900/ P600/ P800/ R3000/ R2880/ 3800/ 3880.
- Media type: Epson Premium Semi-Gloss or Archival Matt
- Quality: Set to manual option 4.
- Set the mode to "OFF no colour Adjustment."
- Click OK and then click OK to print

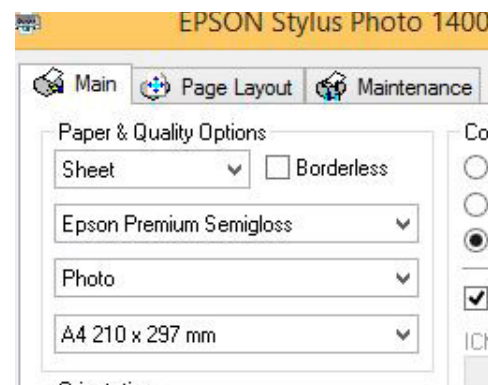


APCU Instructions PC.

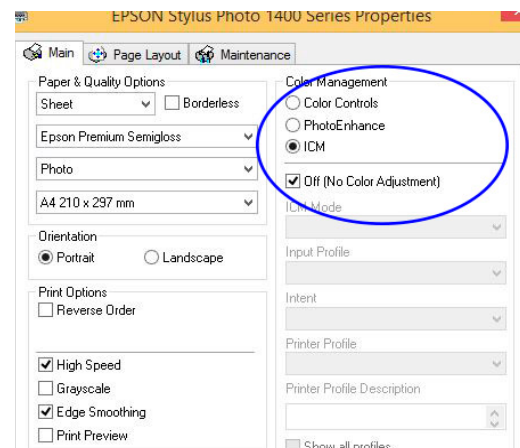
- Epson 2400, 1800, 800 & 1400 Driver Settings.
- Within the properties window click "Advanced".



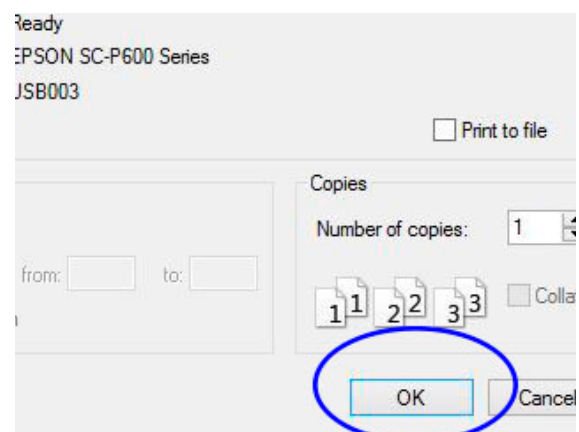
- Media type: Epson Premium Semi-Gloss or Archival Matt
- Quality: Set to "Photo"



- Set the mode to ICM and tick the box saying "OFF no colour Adjustment."



- Click OK and then click OK to print

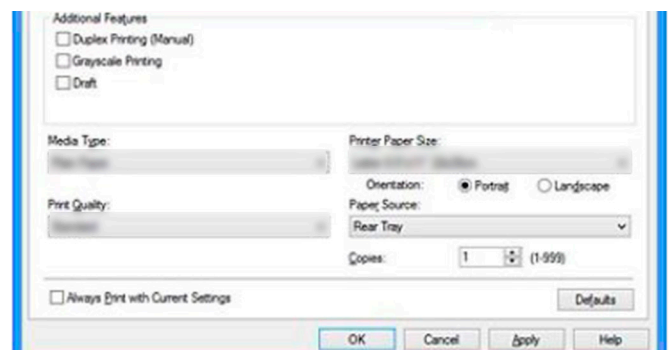


APCU Instructions PC.

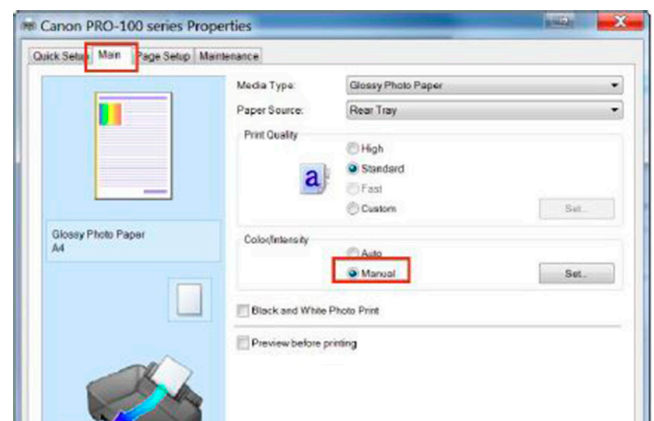
- On each of the printers below I have highlighted how to turn off colour management, set the media type (to the recommend type on our paper information document within the profiling pack) and how to set the recommended quality option.

Canon

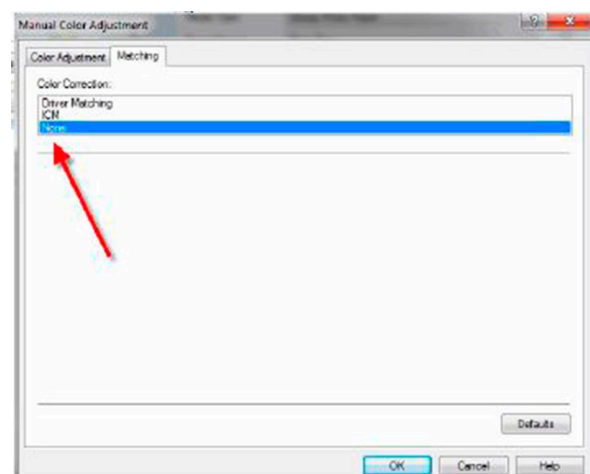
- Media type: Canon Plus Semi-Gloss or Heavy Weight Fine Art.
- Quality: Set to Highest



- To off colour management you will have to click on the “Main” tab.
- From there locate the colour section and click on “Manual”

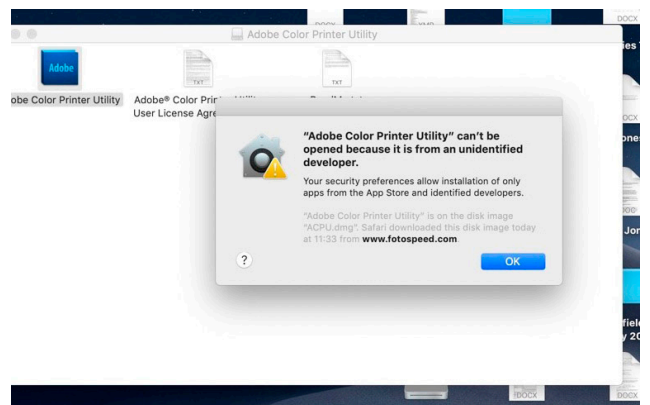
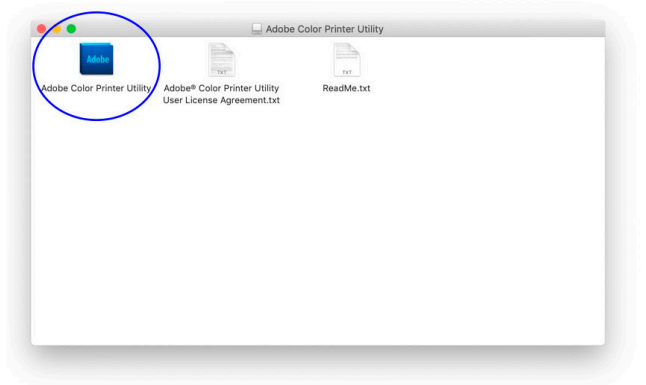
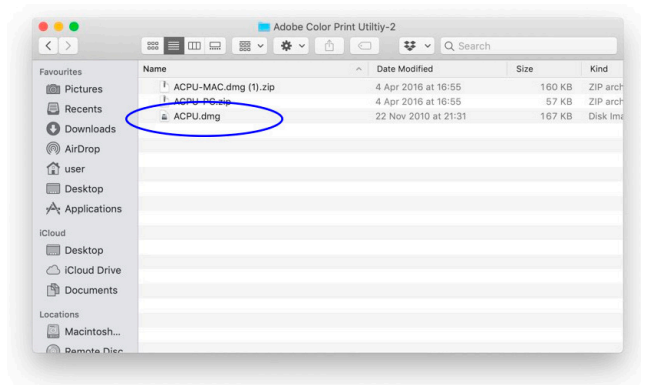
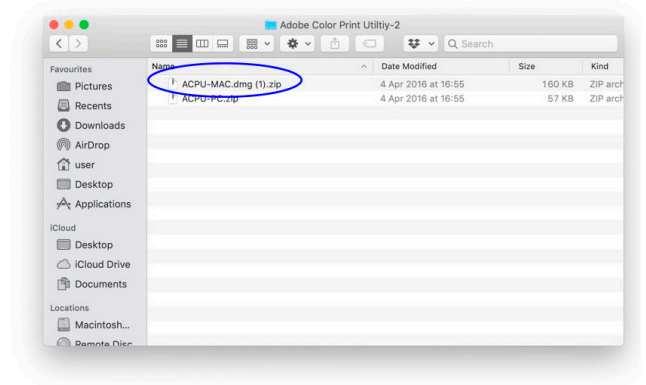


- Next Click on the matching tab and select “none” in the Color correction menu.
- Now click “OK” and “OK” again to print.
- Click OK and then click OK to print



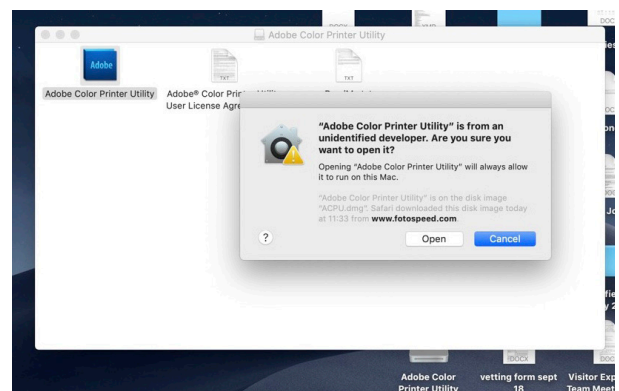
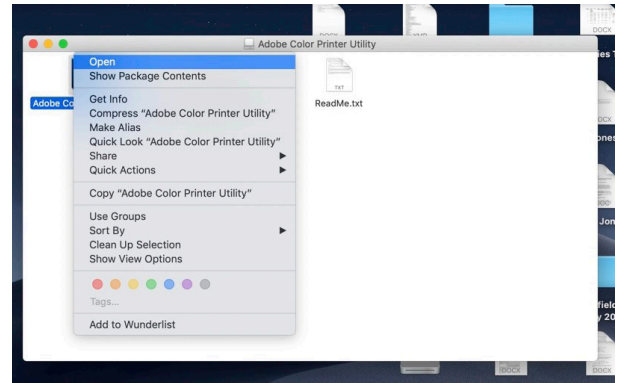
APCU Instructions MAC.

- Start by clicking on the “ACPU-MAC”. The file will be autocratically extracted.
- Next double click on “ACPU.dmg”
- Next click through the folders until you see three files listed. “Adobe Color Print Utility.EXE” “Adobe(R) Color Printer Utility User License Agreement” and a “ReadMe.txt.”
- Within this folder we need to click “Extract All” which will be in your tool bar at the top of the window.
- Then double click on the Blue Adobe Color Print Utility icon.
- You may now see an error box stating that the program could not be opened because the application is from an unidentified developer. If you see this warning click “OK”continue and follow the following steps.

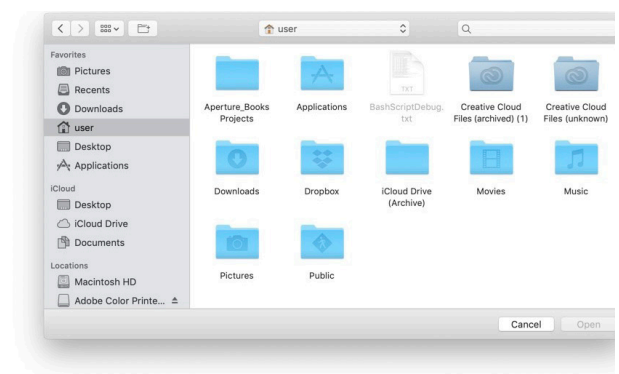


APCU Instructions MAC.

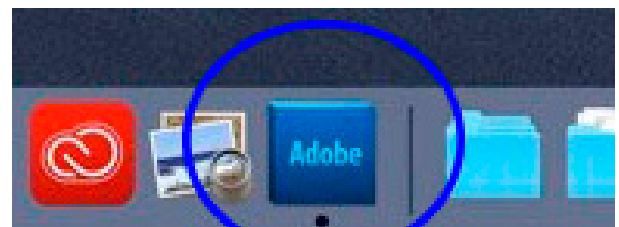
- Once you click “OK” you will returned to the finder box with the three icons in.
- Ctrl click (right click) on the Adobe Color Print Utility icon.
- In the drop down menu click “OPEN”.
- A similar box to the one you saw before will appear. But this time there should be the option to open. If not click “OK” again and run through the “Ctrl click”--“Open” steps again.



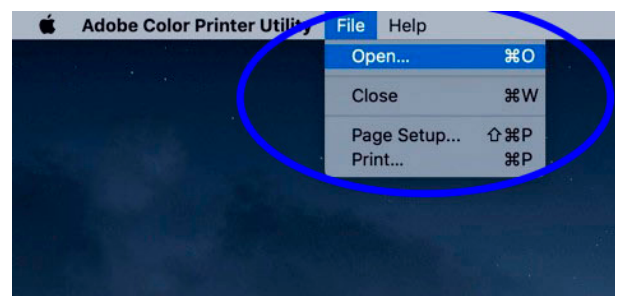
- Now we are ready to open the chart.
- Once the ACPU has opened you should see a blank or greyed out Finder box appear.



- If this box does not open look in your “dock” for the blue Adobe icon and click it.

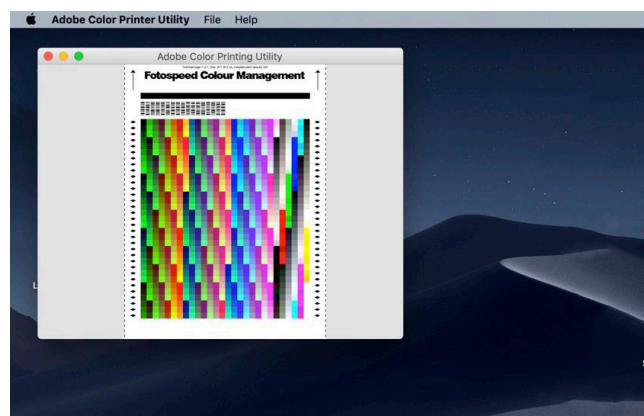
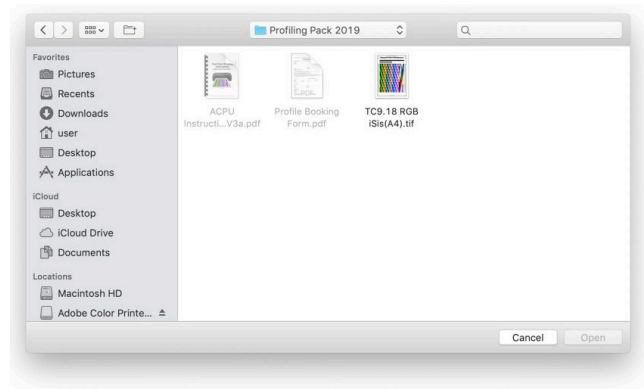
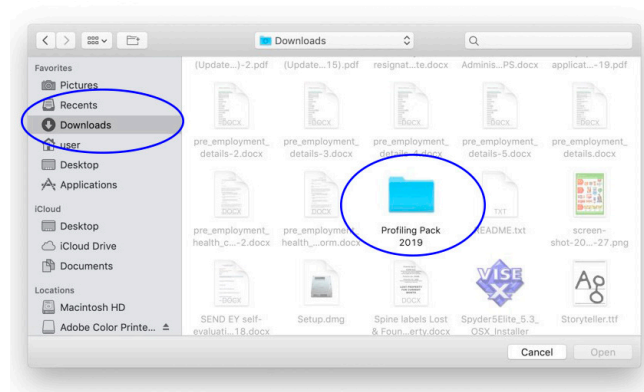
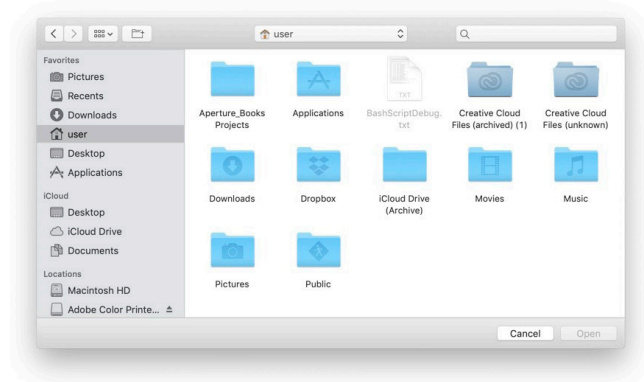


- Now click “file” “Open” from the top left of your screen. This will now open the missing finder box for you.



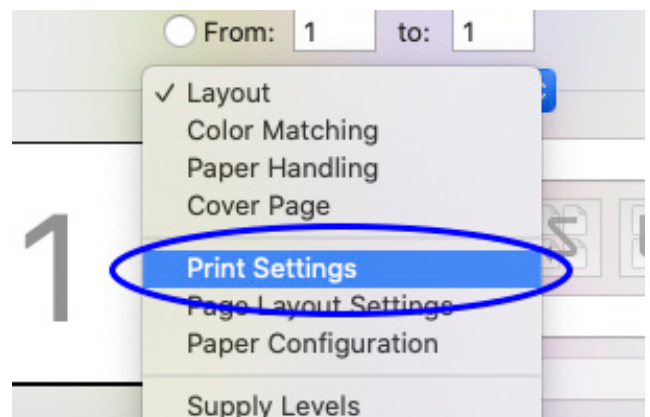
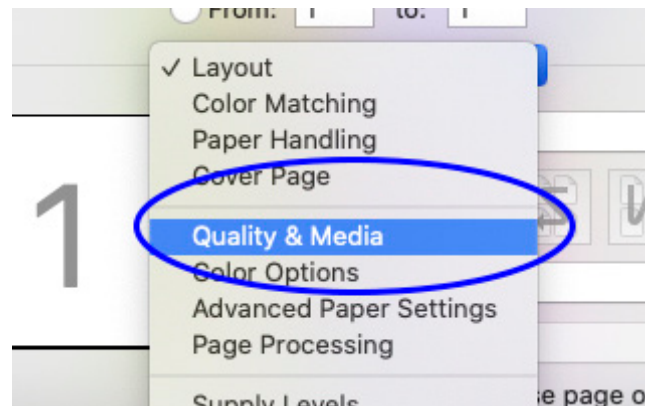
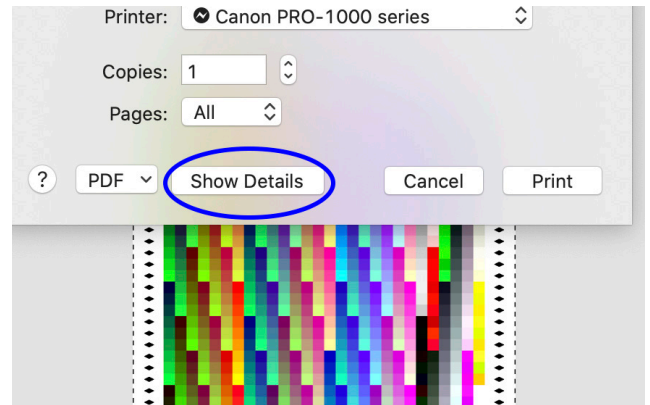
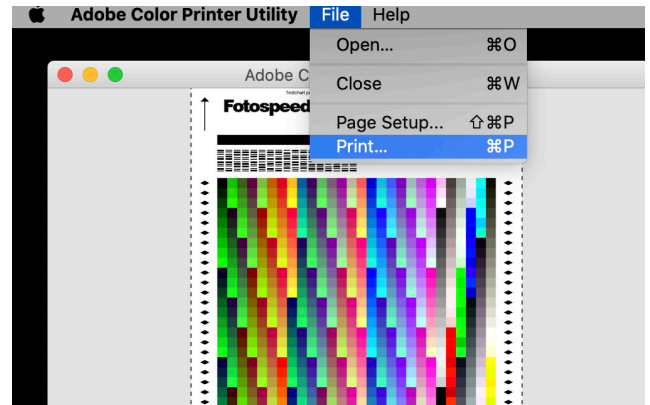
APCU Instructions MAC

- Now with the new finder box open you need to navigate to the profiling pack and select the ACPU.
- Start by clicking on the left side of the box to select where you saved the profiling pack to. If this was downloaded from our website most web browsers will default save the pack in the downloads folder.
- Once you have located the profiling pack. Double click on the pack.
- Once the pack opens you should see the profiling chart labelled TC9.18 RGB iSis(A4).tif. The other files in the folder will be greyed out as the ACPU only opens Tiff files.
- Double click on the chart.
- Now the chart will have opened for you.



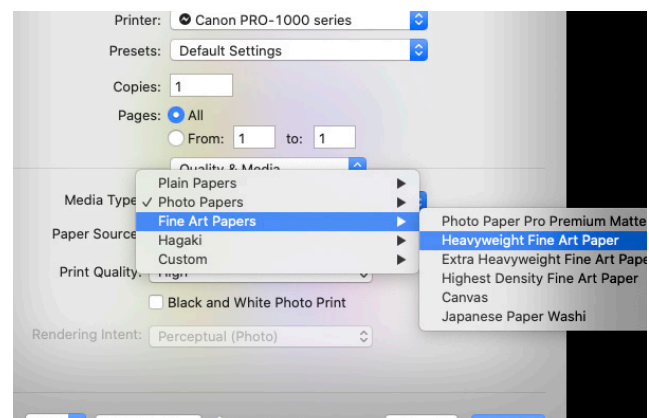
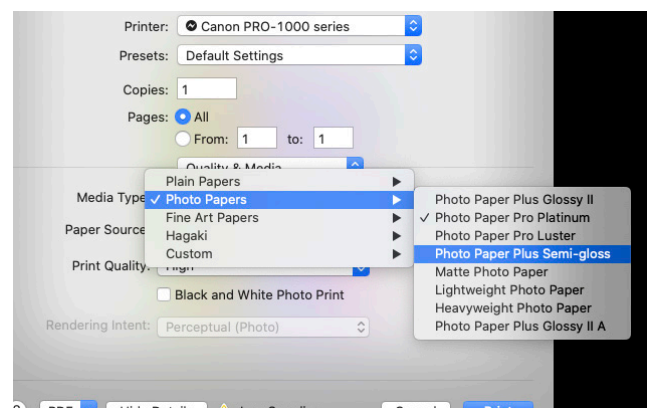
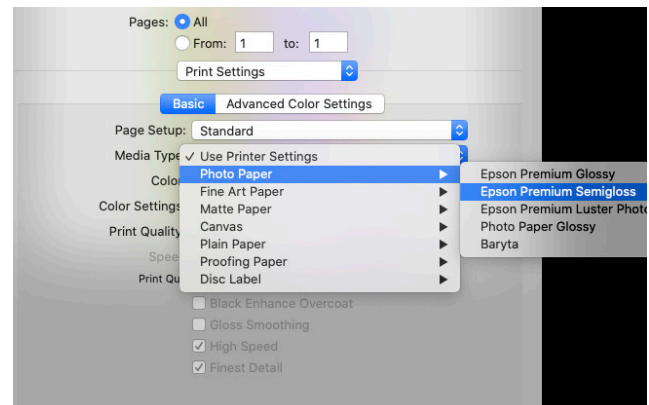
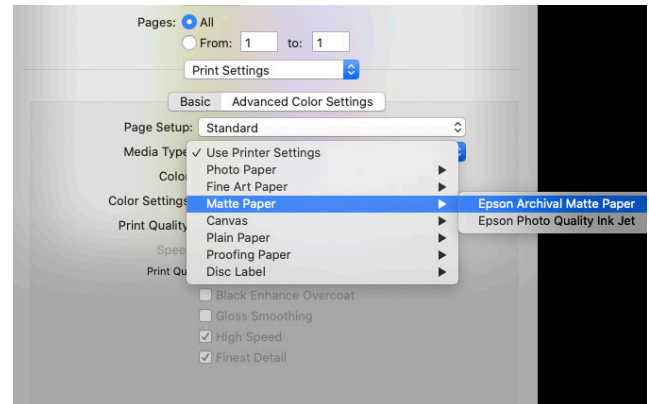
APCU Instructions MAC

- Now the chart is open it is time to print.
- Click “file” and print and this will bring up the MAC printer properties. This window will look the same on all printer makes.
- Within this window you will only need to select the media type you are using. The colour management on MAC computers is turned off automatic if you are using the ACPU to print the chart. To select the media type first click on “show more details”
- Next select the drop down menu that says “Layout”.
- Within this drop down menu you will need to click on either: “Quality & Media” if you are a CANON user or “Printing Settings” for EPSON users.



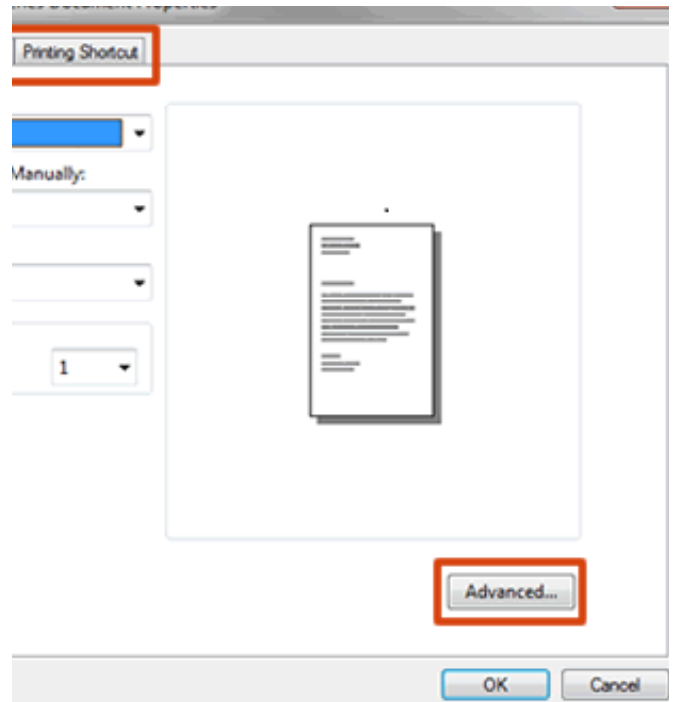
APCU Instructions MAC.

- Once you are in the “Print Settings” or “Quality & Media” menu you will now need to select the media type you are using.
- on document included in the profiling pack to select the correct media type for your printer and paper.
- The general settings for Epson printer will be:
Epson Premium Semi-Gloss or Archival Matt
- The general settings for Canon printers will be:
Plus Semi-Gloss or Heavy Weight Fine Art/
Matte Photo Paper.
- The last thing to do before you select Print is to make sure you have the quality options set to “High” on a Canon and “High Quality” on Epson Printers.
- Now click Print.



APCU Instructions PC

- HP Printers
- Within the Advanced properties window select the media you will be using.
- Media type: Premium Semi-Gloss or Archival Matt
- Quality: Set to “Best”



- Within the Colour options select Colour management and set the drop down menu to “Application Manages Colours.”
- Click OK and then click OK to print

