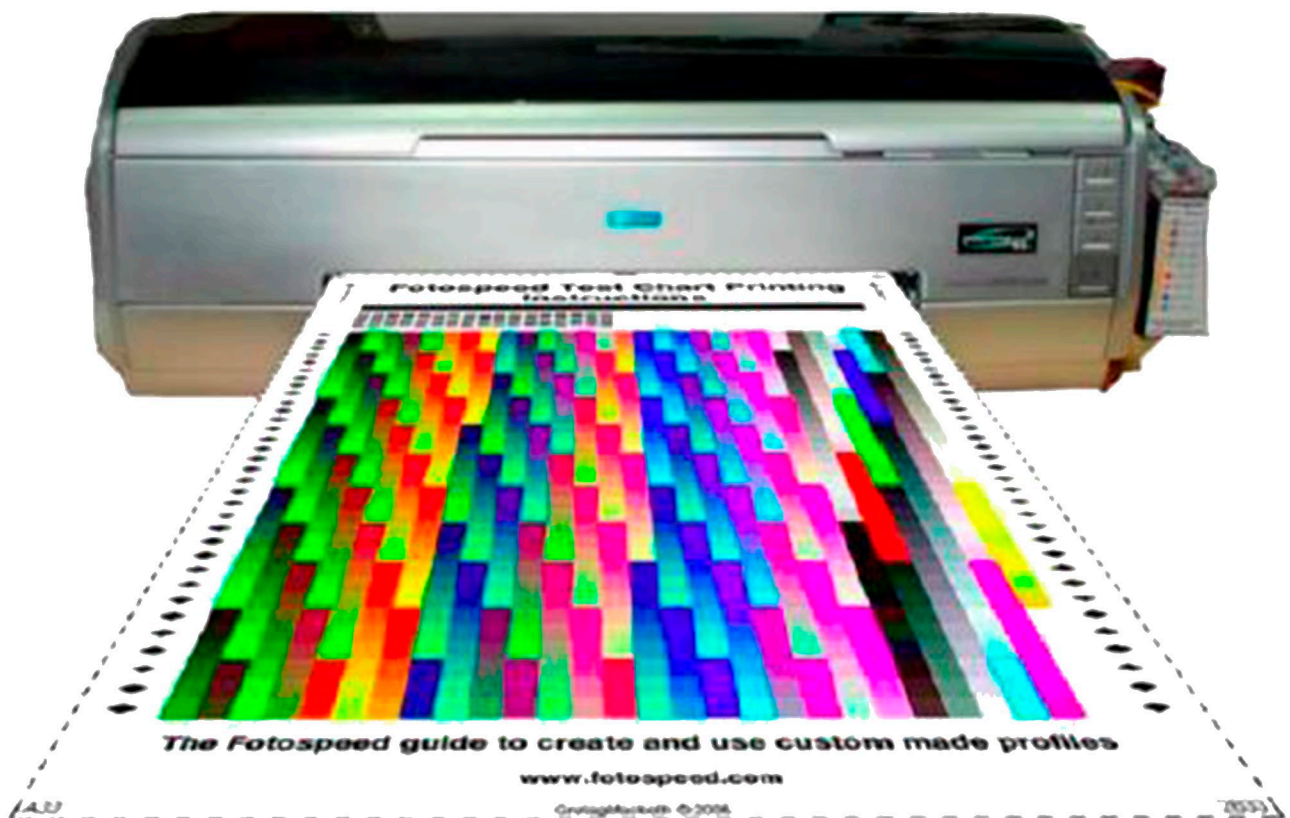


Fotospeed

Test Chart Printing Instructions

Adobe Colour Print Utility



www.fotospeed.com

Contents

Introduction.....	1-2
Downloadng the ACPU.....	3
Printing the Test Chart: PC.....	4-5
Printing the Test Chart: MAC.....	6-7
Epson 2400, 1800, 800 & 1400 Driver Settings.....	8
Epson 2880, R3000, 3800, 3880, SC-P600, SC-P800 Driver Settings...	9
Epson 1290 & 2100 Driver Settings.....	10
Epson 1900 Driver Settings.....	11
PC: Canon Driver Settings.....	12
PC: HP Driver Settings.....	13
MAC: Printer Driver Settings.....	14

Fotospeed TEST CHART PRINTING INSTRUCTIONS

Adobe Colour Print Utility for Epson, Canon and HP printers

INTRODUCTION

One of the prime concerns of many photographers when producing inkjet prints is the ability to reproduce onto paper what is seen on the computer screen. The main reason for this is the simple, but little known fact, that all printers interpret colour differently. Each one has an in-built generic profile that it uses to describe the colour that it “should” produce. This is built in by the manufacturer and, in reality, is a ‘guess’ at what the printer should do. The guess is often wrong. A profile is essentially a description (a label or tag) of the characteristics of a device. For instance, each time you take a picture with a digital camera it will embed a profile within each image file. This profile is a description of the colour within that image file, which is a known international standard.

In order to ensure that the colour description is carried through to the printer an output profile needs to be built for each paper that is used on a particular inkjet printer using a particular ink set and paper combination. An output profile will deliver known, consistent colour to your inkjet printer. This is done by converting the colour values in the input profile accurately to the output profile ensuring that the original colour description is maintained; much like a translation between 2 languages.

Building an output profile is a simple process. However, like most things in life, particularly computing, the process must be set up correctly.

The first part of this process is to print a test chart that will be used to create the profile. The test chart is the first building block to creating accurate printer output. It is essential that it is printed using the correct procedure. This is not difficult to do but, if you are unfamiliar with colour management, it can easily be done incorrectly. If printed incorrectly then the subsequent output profile will be incorrect. Following the instructions will ensure that the test chart printing process is carried out correctly and you will be guaranteed consistent, accurate colour each and every time you create a print. This will increase your enjoyment as well as saving time and money in reduced waste of paper, ink and time.

In order for an output profile to work correctly it is essential that the colour management (Colour Control) within the printer is switched off. If left on it will conflict with your custom profile resulting in inaccurate colour reproduction. There are many different printers on the market today and many of them use different methods of switching off the colour management within them.

In order for an output profile to work it must be able to convert from an input profile, as mentioned earlier. In order for an input profile to be available you must use a graphics

program that is capable of colour management. The best and most used by digital photographers are Adobe Photoshop or Adobe Elements.

It is essential that the test charts are printed correctly so please ensure that you follow the instructions precisely. If you provide an accurate test chart then you will be given an accurate profile. Equally, remember that garbage in = garbage out.

Print the test chart on each paper that you want profiled, complete the Booking Form and post the chart to the address shown at the bottom of the Booking Form.

PLEASE READ THE INSTRUCTIONS CAREFULLY

NB: We do also offer a Log Me In service for £20 where one of our tech team would remotely access your computer to set up and print out the test chart for profiling.

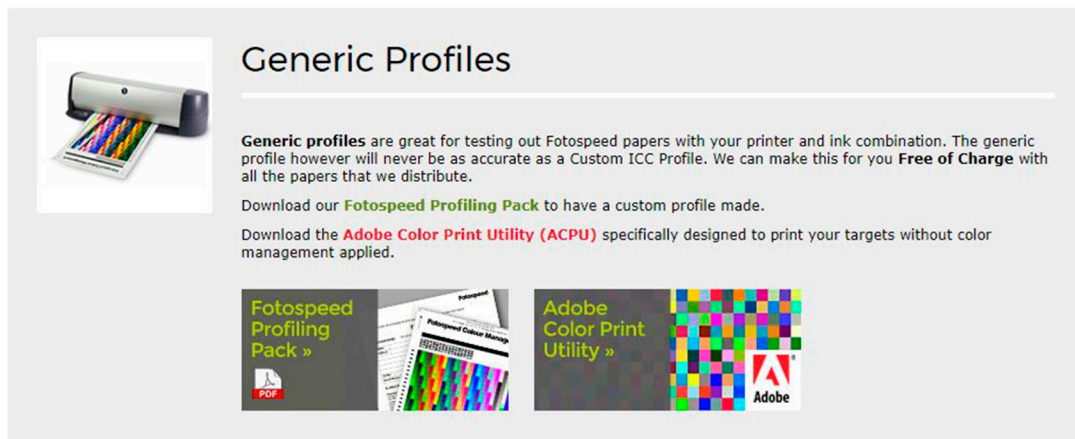
If you would like any more information on this, or would like to book in a session, please email info@fotospeed.com or call on 01249 714 555.

Downloading the Adobe Colour Print Utility

To download the Adobe Colour Print Utility, go on to our website – www.fotospeed.com and go to the 'Support tab on the green bar across the page.

Then go down to 'Printer Profiles' > 'Generic Printer Profiles'.

This screen will load with the ACPU link at the top of the page (as shown below):



Click on the link and the Adobe Colour Print Utility will automatically download.

If you have't already, you can download the test chart (that will need to be printed and sent into us for profiling) from the link titled 'Fotospeed Profiling Pack'

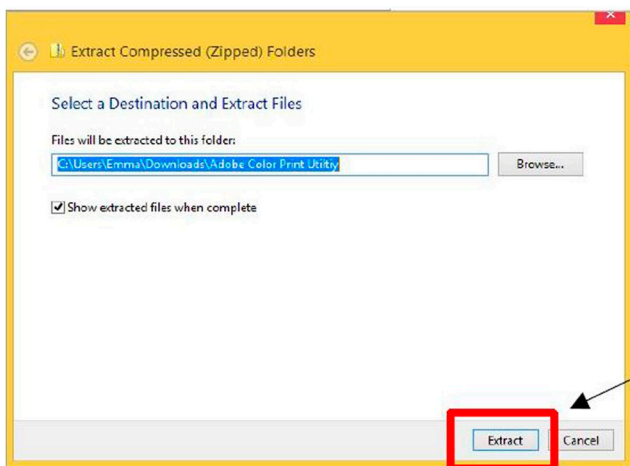
Printing the Test Chart:

PC

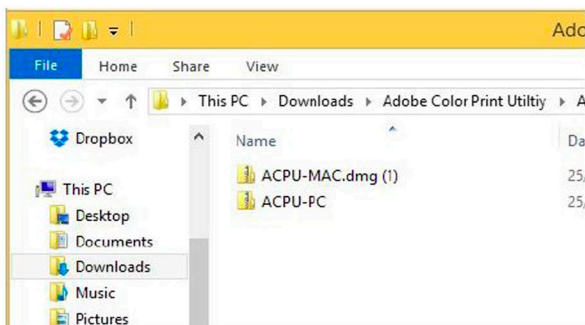
Once you have downloaded the Adobe Colour Print Utility, go into your downloads folder on your computer.

The ACPU folder will be a zipped file, so right click on the download and select 'Extract All...'

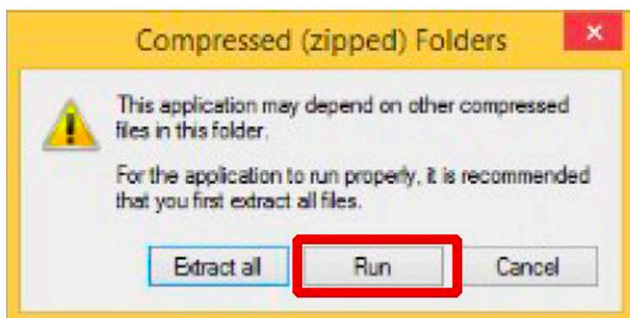
Once this has been selected, the pop up box (shown below) will appear:



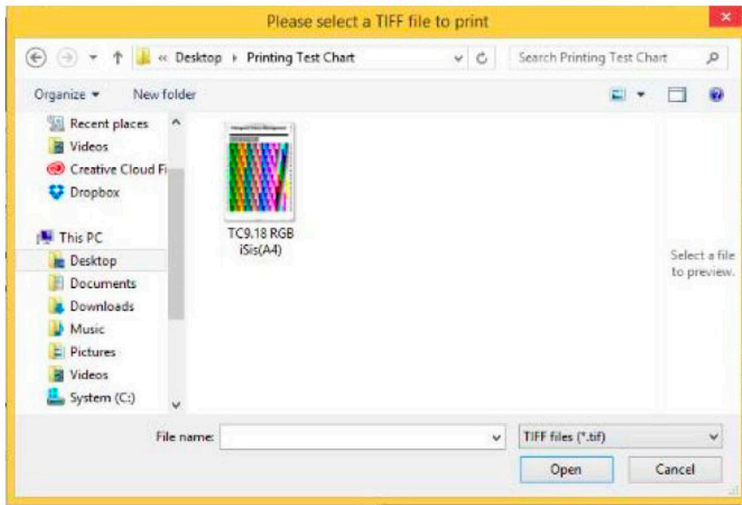
Once extracted, your file explorer will open with the Adobe Colour Print Utility file. Double click, and it will open as shown below:



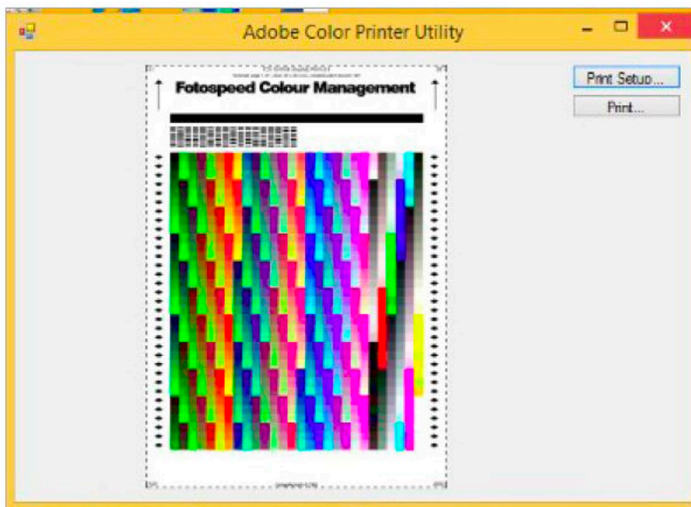
Double click on the 'ACPU-PC' file, and select 'Run' when the message below shows:



Once selected, your file explorer will open and you will be asked to select a Tiff file to print. This is referring to the test chart, so you will need to locate the chart titled 'TC9.18 RGB' and double click on it to open into ACPU.



Once selected, the test chart will open into the corner of your screen as shown below:



Select 'Print Setup' and check that the paper size is set to A4.

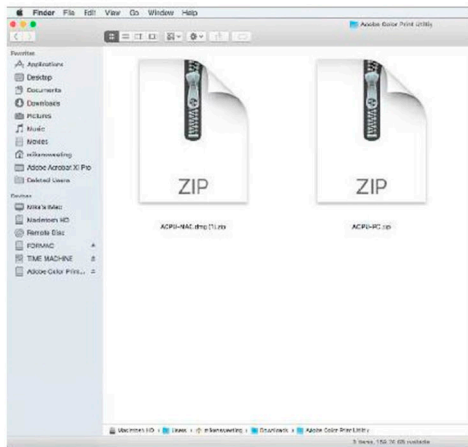
Then go to 'Print' which will open your printer driver.

Please now go to the correct page to go through setting up your printer driver.

Printing the Test Chart:

MAC

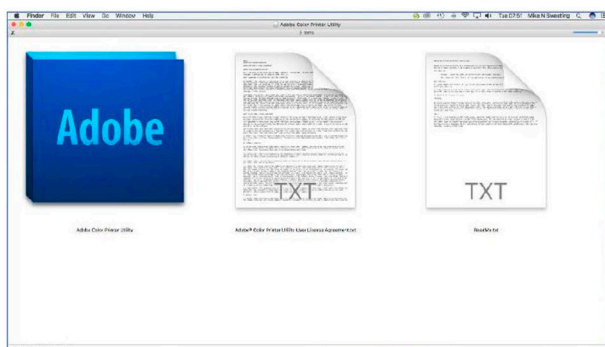
Once you have downloaded the Adobe Colour Print Utility select the zipped file 'MAC.dmg'.



This will then open up another folder named 'ACPU.dmg'.
Double click on this.
(Shown below)



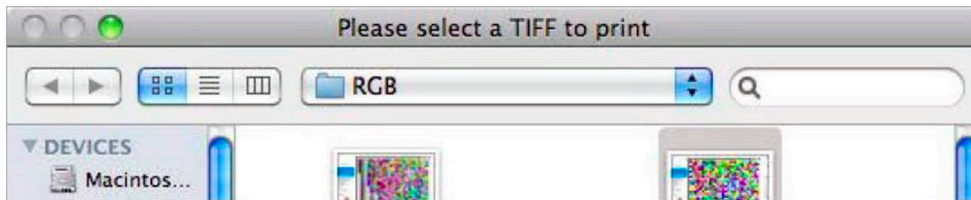
This will then open up a final window. At this stage, hold down the 'CTRL' key on your keyboard, click on the blue Adobe Colour Print Utility icon and select 'Open'.



Once you have done this, a separate box will open asking you to 'Select a Tiff file to print'.

This is referring to the test chart (TC9.18 RGB...) that you will be printing onto your paper(s) of choice.

When this box comes up (as shown below) locate the test chart and double click. This will then open the chart into Adobe Colour Print Utility.



NB: As you can only print Tiff files from Adobe Colour Print Utility, all other files will be greyed out.

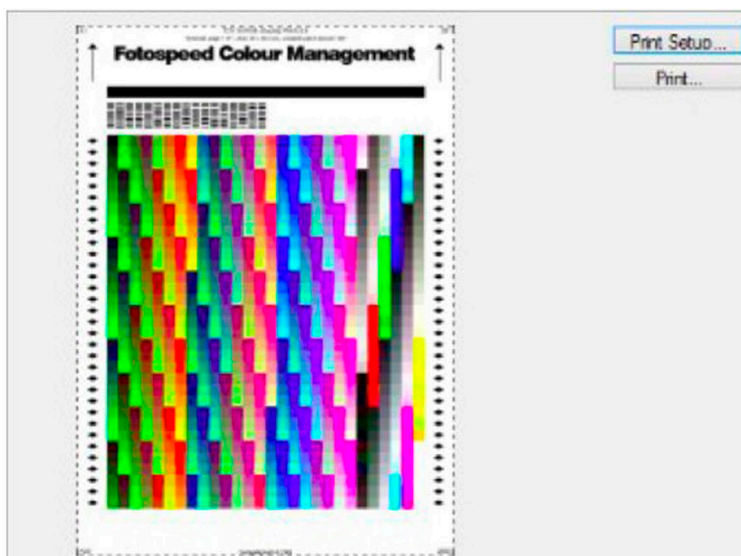
If the box asking you to select a TIFF file doesn't appear, then just click on the blue ACPU icon on the doc, and then select File > Open at the top left of the screen. This will then bring up a box in which you can select or open the file of the test chart.

The test chart will then open into the top left hand side of your screen and will appear as shown in the image below.

Select 'Print Setup' and check that the paper size is set to A4.

Then go to 'Print' which will open your printer driver.

Please now go to the correct page to go through setting up your printer driver.



PC - Epson Printer Driver Settings

Printer Settings:

Printer Settings – Epson R2880, R2000, R3000, 3800, 3880, SC-P600, SC-P800

Start by selecting the correct media type.

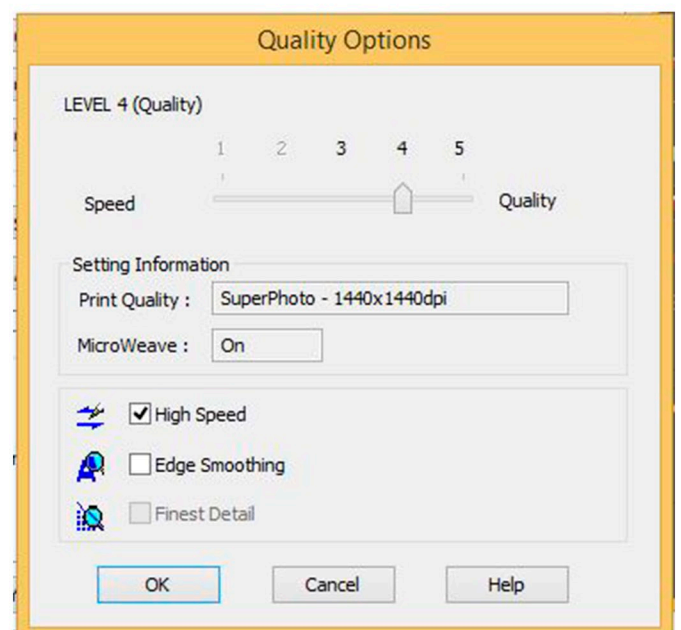
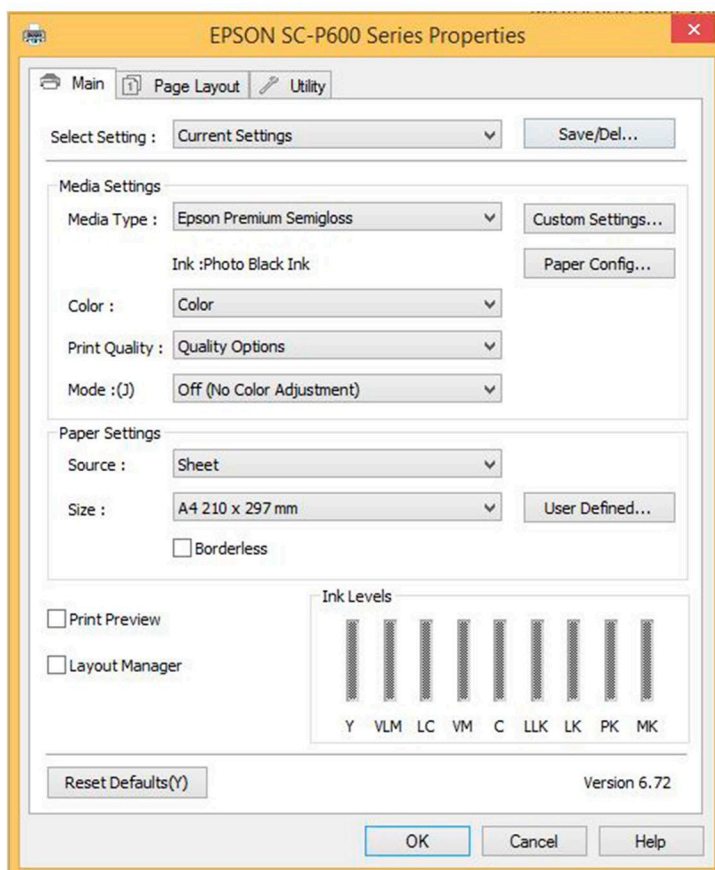
You want to select 'Epson Premium Semi-Gloss' for any semi-gloss/lustre/glossy papers and 'Epson Archival Matte' for any matte papers.

Set the Colour to 'Colour'.

Then set the print quality. On this drop down select 'Quality Options' and the box shown bottom right will appear. Set the quality level to 4.

Make sure the mode is set to 'Off (No Colour Adjustment)' to ensure all colour management has been switched off in the printer driver.

Finally, set the size to A4 and make sure 'Borderless' is left unchecked.



PC - Epson Printer Drivers

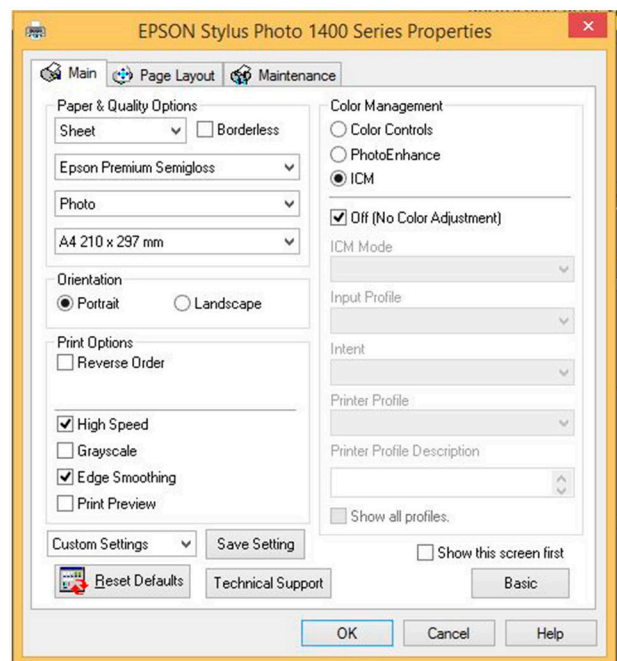
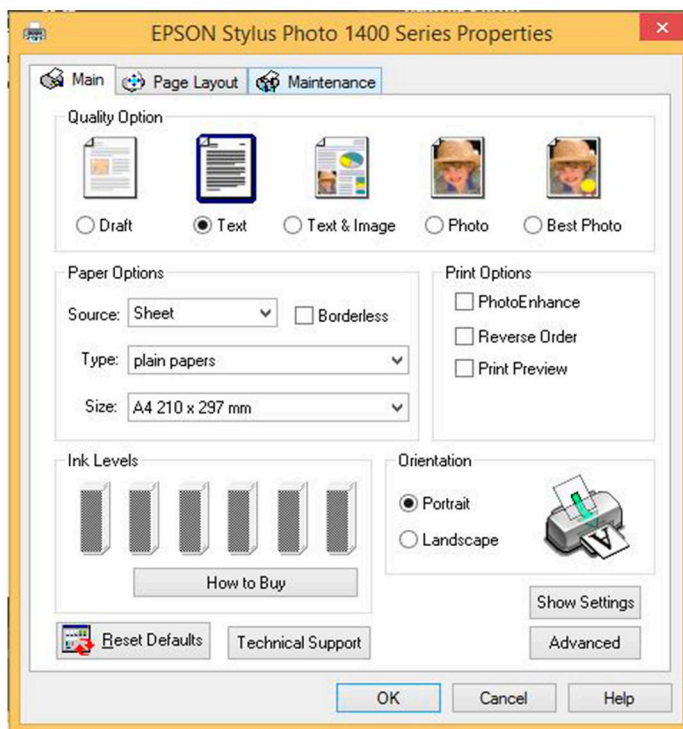
Printer Settings: Epson R2400, 1800, 800 and 1400

Start by setting the Quality Options to 'Best Photo'.

Then select the correct media type under the 'paper options' section.
You want to select 'Epson Premium Semi-Gloss' for any semi-gloss/lustre/glossy papers and 'Epson Archival Matte' for any matte papers.

Then select 'Advanced' on the bottom right hand corner of the printer driver and the box demonstrated to the bottom right of this page will appear.

Once this has opened, select 'ICM' and then tick 'Off (No Colour Adjustment)'.
This ensures all of the colour management is switched off in the printer driver.



PC - Printer Driver Settings

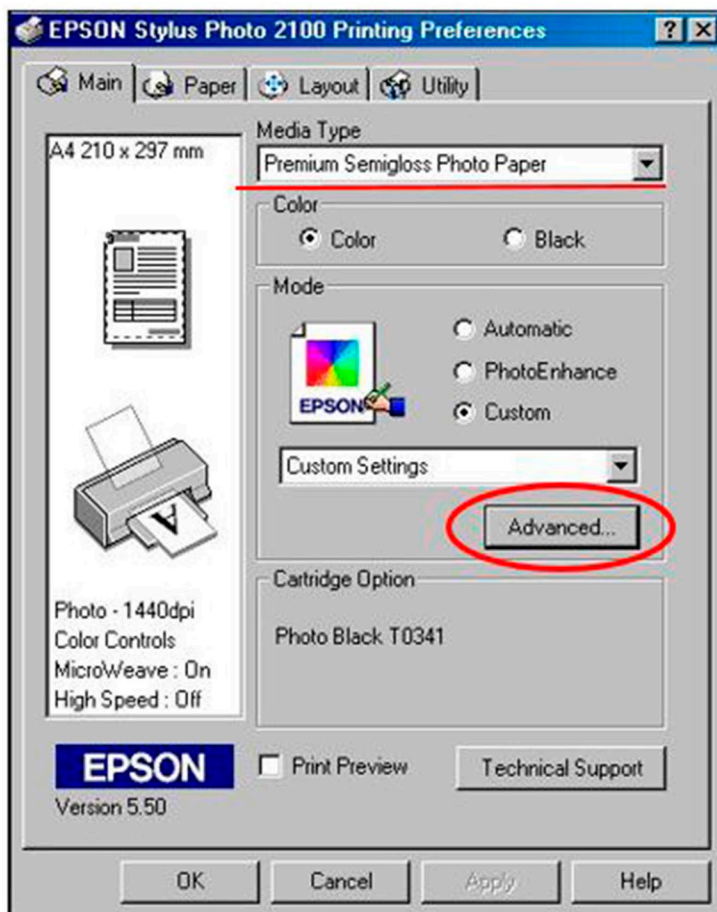
Printer Settings: Epson 1290 & 2100

Start by selecting the correct media type - 'Premium Semi-gloss' for any semi-gloss/glossy/lustre type papers or 'Archival Matte' for any matte papers.

Make sure Colour is set to 'Colour'.

Set the mode to 'Custom'.

Then go into 'Advanced' and under the colour management section select 'No Colour Adjustment'.



PC - Printer Driver Settings

Printer Settings: Epson 1900

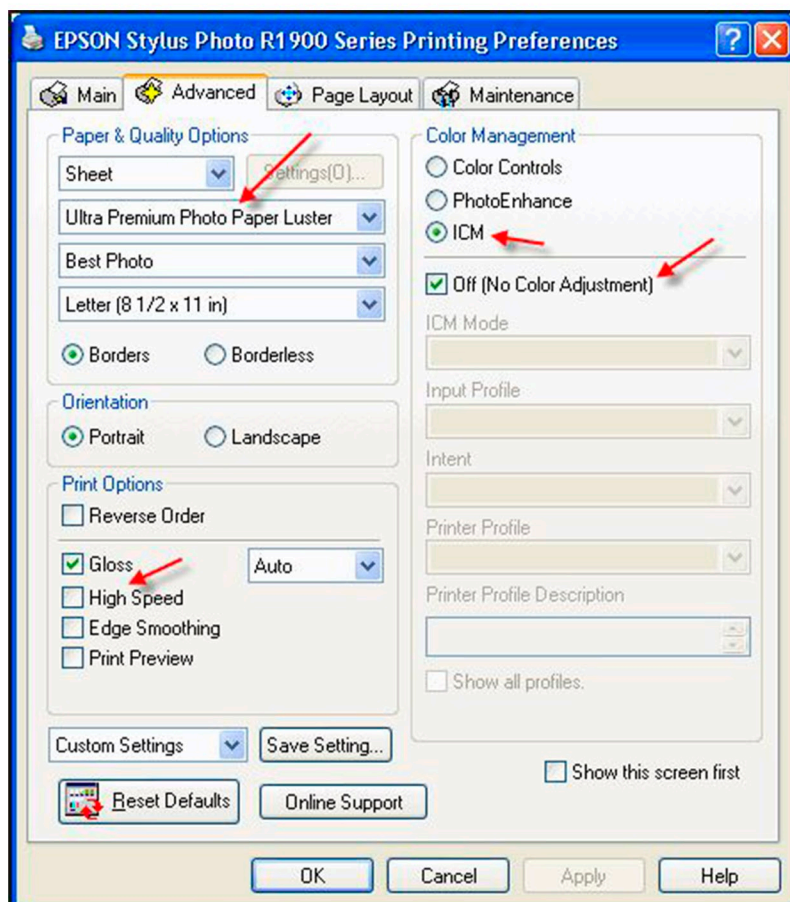
Start by selecting the 'Advanced' tab and you will see the window shown at the bottom of the page.

The media type depends on which paper you are using:
Select 'Epson Premium Semi-gloss' for any semi-gloss/glossy/lustre finish papers
or 'Epson Archival Matte' for any matte papers.

Then select the drop down box on Print Quality and select Best Photo.

You also need to make sure that all of the colour management is switched off in the printer driver. To do this, select ICM and then check the box 'Off (No Colour Adjustment)'.

Finally make sure that the paper size is set to A4 , 'borders' is checked and you have selected to print portrait in the orientation section.



PC - Canon Printer Driver Settings

Start by selecting the media type in the driver- This will either be 'Photo Paper Plus Semi-Gloss' for any semi-gloss/glossy/lustre finish papers or 'Matte Photo Paper' for any matte papers.

Set the paper size to A4.

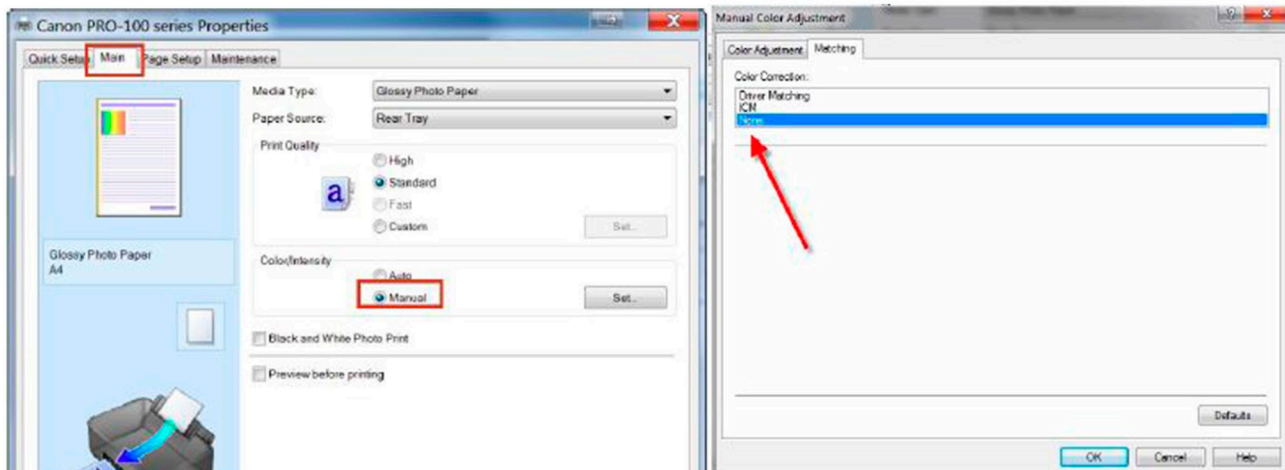
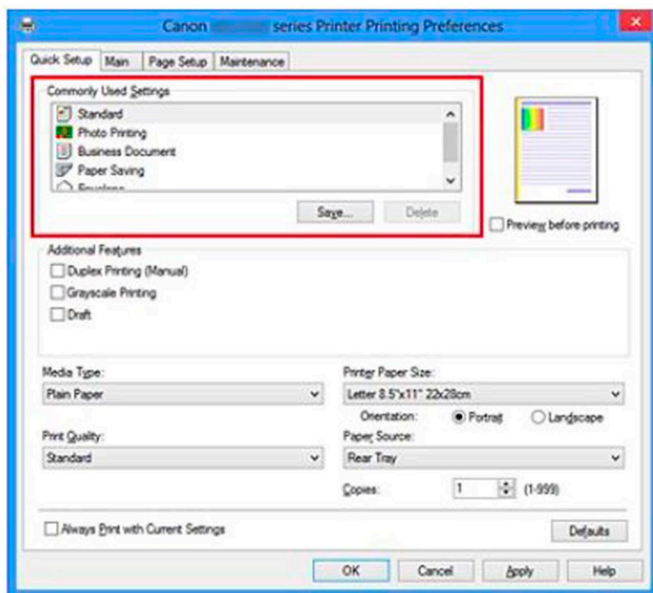
Then select the drop down on Print Quality and set it to 'High'.

Once you have done this, go to the 'Main' tab. This will open up the window shown bottom left.

On this window, go to the 'Colour/intensity' section, select 'Manual' and then 'Set'.

This will then open up a final window shown to the bottom right of the page.

On this, go to the 'Matching' tab and set it to 'None'.



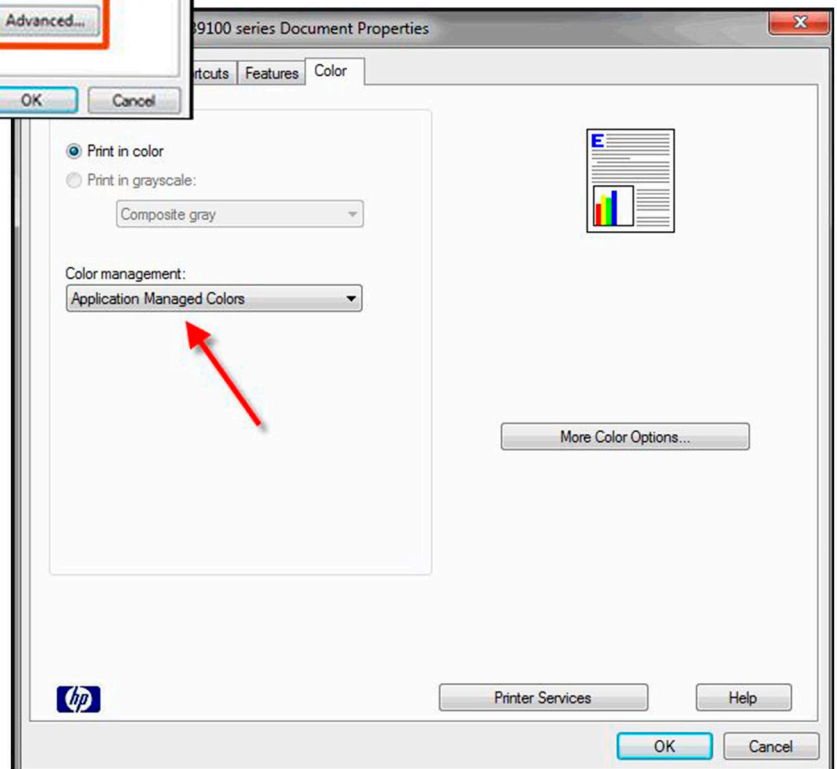
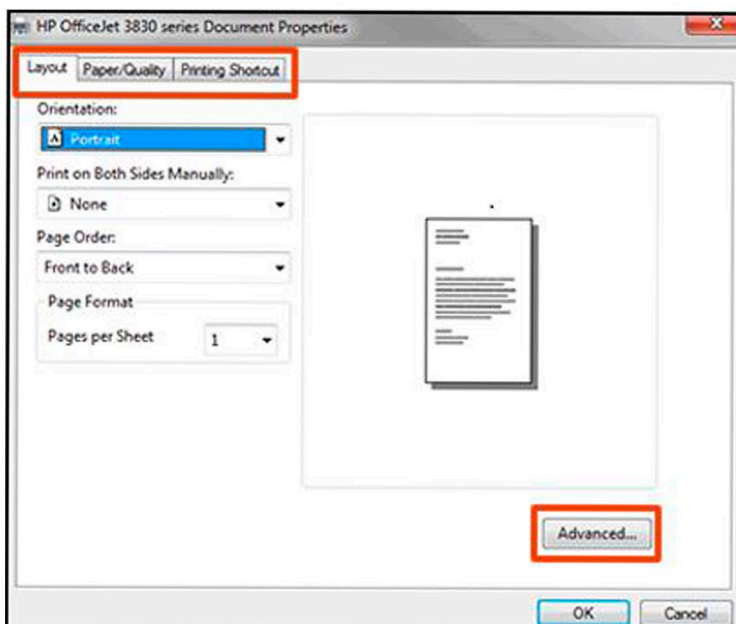
PC - HP Printer Driver Settings

Select your paper type - Either Premium Semi-Gloss for any gloss type paper or Archival Matt/Ultra Premium Presentation Matt depending on what option is available.

You need to make sure colour management is turned off in the printer. Select Colour > Colour Management > Application Manages Colours.

Make sure the paper size is A4. Do not select borderless as it needs to be printed as is.

Set the quality to 'Best'.

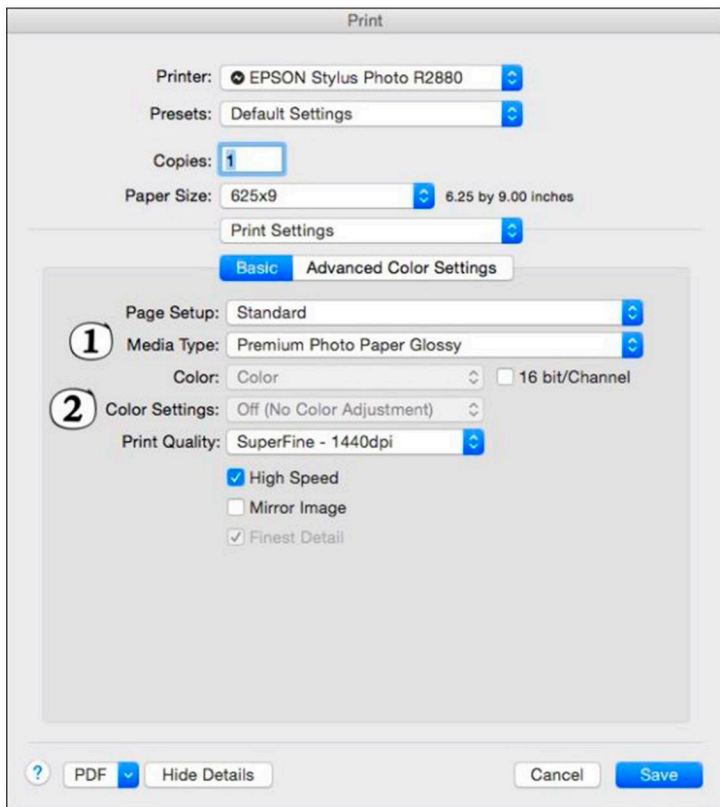


MAC - Printer Driver Settings

Epson

It may appear that the MAC printer driver instructions are not as thorough as the instructions for printing from a PC; however this is not the case. With MAC computers, the driver settings stay almost exactly the same for all different printers.

With the introduction of Sierra , there were also some fundamental changes to the way colour management and the printer drivers work. Initially this caused some major problems, but for the most part, these are now fixed. It is very important to download the latest printer driver for your printer before attempting to get your printer profiled – some drivers did not work with the new operating systems at first, and new versions were released to fix this.



The settings differ slightly depending on whether you are using a Canon or Epson printer, so we have included both what you will see on an Epson and Canon driver in the instructions below.

Firstly make sure the paper size is set to A4.

Then go to 'Printer Settings' / 'Quality & Media' to set the media type.

This is dependent on which paper you are using:

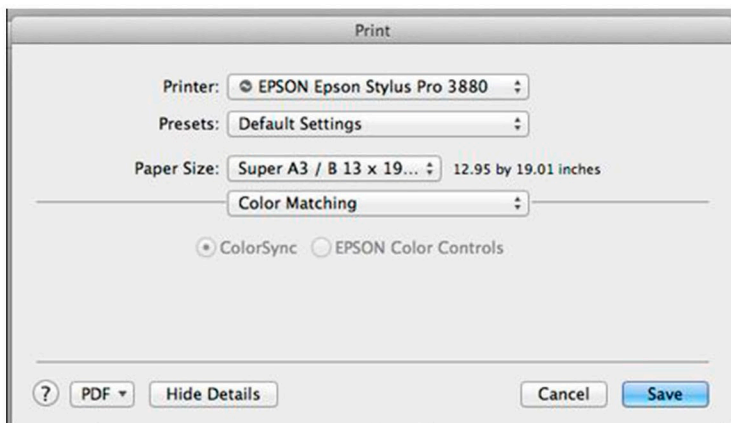
- Set it to 'Epson Premium Semigloss'/'Photo paper pro semi-gloss' for any glossy/semigloss/lustre papers.

- Set it to 'Epson Archival Matte'/'Matt Photo Paper' for any matte papers.

Then make sure the 'Colour Settings' sections is either greyed out or set to 'Off (No Colour Adjustment)'.

Choose Superfine 1440dpi for Print Quality.

Then go back to the drop down in the centre of the driver and select 'Colour Matching' and make sure the options (as shown to the left) are either greyed out or set to Epson Colour Controls / Canon Colour Controls.



MAC- Print Driver Settings

Canon

Firstly set your paper size to A4

Then click on layout and select:
“Quality and Media”
From here select the media type.

This is dependent on which paper you are using:

For Gloss/Semi-gloss/Lustre papers.

-Set the media type to:
Photo paper Pro Lustre

For All Matte Papers:
-Set the media type to:
Matte photo Paper

Next, choose “High Print Quality”

Then select the Color Matching tab to check
that the colour settings are greyed out.
(No Colour Adjustment).

The last step is to click “Print”.

